



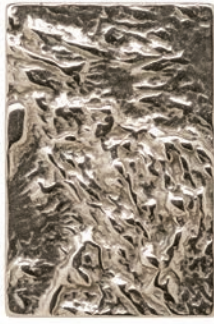
**EDGE**  
COLLECTION

ROCKY MOUNTAIN  
H A R D W A R E

## TEXTURES



BASIC



MOONSCAPE



TIDE



WIRE

Introducing a bit of texture to your design offers added depth and dimension without compromising the minimalistic sensibility of this collection. Available in six highly textural motifs and 10 richly hued patinas, you can create a customized look that's uniquely your own.



WOOD



WEAVE

## PATINAS

### SILICON BRONZE



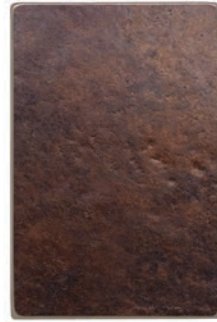
BRUSHED



LIGHT



MEDIUM



RUST



DARK, LUSTRE



DARK

### WHITE BRONZE



BRUSHED



LIGHT



MEDIUM

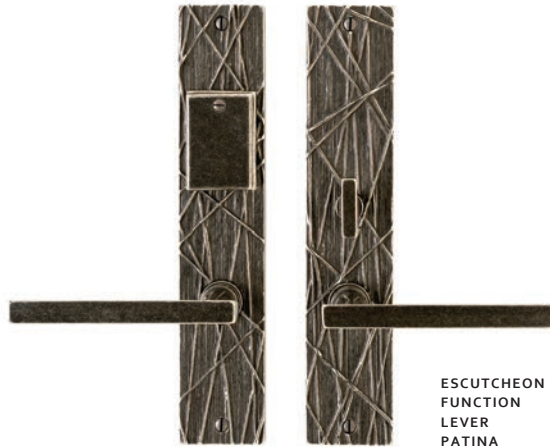


DARK

ENTRY SET COMBINATIONS



**ESCUTCHEON** 2" x 18" | 2" x 10"  
**FUNCTION** ENTRY THUMBLATCH MORTISE LOCK  
**GRIP | LEVER** G250 7 1/2" CIVIC & L330 COUPLER  
**PATINA** SILICON BRONZE, LIGHT  
**TEXTURE** BASIC  
**PART #** G182/E166



**ESCUTCHEON** 2" x 10"  
**FUNCTION** ENTRY MORTISE LOCK  
**LEVER** L260 TROLLEY  
**PATINA** WHITE BRONZE, MEDIUM  
**TEXTURE** WIRE  
**PART #** E168/E166



**ESCUTCHEON** 2" x 3"  
**FUNCTION** ENTRY DEADBOLT/SPRING LATCH  
**LEVER** L330 COUPLER  
**PATINA** SILICON BRONZE, LIGHT  
**TEXTURE** WOOD  
**PART #** E153/E153 WITH DB150

Light in scale with a **streamlined** silhouette that's perfectly suited to today's modern spaces, the **Edge Collection** is perhaps our most **minimalistic** to date. The pared-down aesthetic exemplifies **simplicity** at its best, fulfilling the desire for contemporary bronze hardware that is organically pleasing yet still minimal in design. The highly **customizable** pieces are expertly crafted by hand using the time-honored tradition of sandcasting and are available in six different **textures**.

PASSAGE AND PRIVACY SET COMBINATIONS



**ESCUTCHEON** 2" x 3"  
**FUNCTION** PASSAGE SPRING LATCH  
**LEVER** L330 COUPLER  
**PATINA** WHITE BRONZE, LIGHT  
**TEXTURE** WOOD  
**PART #** E153/E153



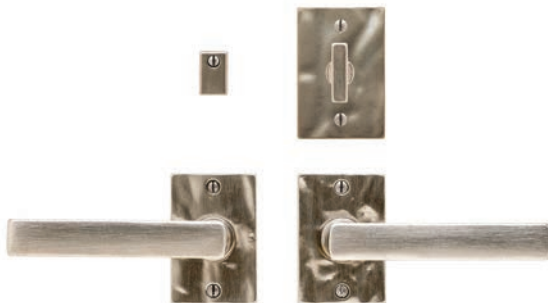
**ESCUTCHEON** 2" x 8"  
**FUNCTION** PASSAGE SPRING LATCH  
**LEVER** L150 BELLA  
**PATINA** SILICON BRONZE, RUST  
**TEXTURE** MOONSCAPE  
**PART #** E160/E160



**ESCUTCHEON** 2" x 10"  
**FUNCTION** PASSAGE SPRING LATCH  
**KNOB** K156 ROUND CAST GLASS  
**PATINA** SILICON BRONZE, DARK LUSTRE  
**TEXTURE** TIDE  
**PART #** E165/E165



**ESCUTCHEON** 2" x 13"  
**FUNCTION** PASSAGE SPRING LATCH  
**KNOB** K236 ORE  
**PATINA** SILICON BRONZE, BRUSHED  
**TEXTURE** BASIC  
**PART #** E170/E170



**ESCUTCHEON** 2" x 3"  
**FUNCTION** PRIVACY MORTISE BOLT/SPRING LATCH  
**LEVER** L261 RAIL  
**PATINA** WHITE BRONZE, BRUSHED  
**TEXTURE** TIDE  
**PART #** E153/E153 WITH IP150

**MULTI-POINT SET COMBINATIONS**



**ESCUTCHEON** 1 3/4" x 11"  
**FUNCTION** MULTI-POINT ENTRY FOR AN PROFILE CYLINDER  
**LEVER** L20230 SHIFT  
**PATINA** SILICON BRONZE, DARK  
**TEXTURE** WOOD  
**PART #** E198/E198

**PUSH/PULL SET COMBINATIONS**



**ESCUTCHEON** 2" x 24"  
**FUNCTION** PULL/PUSH DEADBOLT  
**GRIP** G652 14" OLYMPUS  
**PATINA** SILICON BRONZE, DARK LUSTRE  
**TEXTURE** WOOD  
**PART #** G185/G184

**SLIDING DOOR SET COMBINATIONS**



**ESCUTCHEON** 1 3/4" x 13"  
**FUNCTION** SLIDING DOOR ENTRY FOR AN AMERICAN CYLINDER  
**GRIP** G260 6" OFFSET CURVED RAIL  
**PATINA** WHITE BRONZE, LIGHT  
**TEXTURE** WEAVE  
**PART #** E189/E188



**TECHNICAL REQUIREMENTS:**

- Custom door prep required
- Not for use on doors with 2 1/8" facebore
- Requires a minimum of 1 3/4" thick door

**ROCKY MOUNTAIN**  
H A R D W A R E

SOLID BRONZE ARCHITECTURAL HARDWARE

1.888.788.2013  
[www.rockymountainhardware.com](http://www.rockymountainhardware.com)