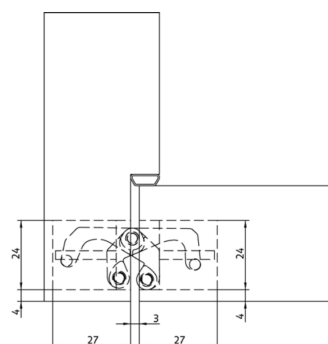
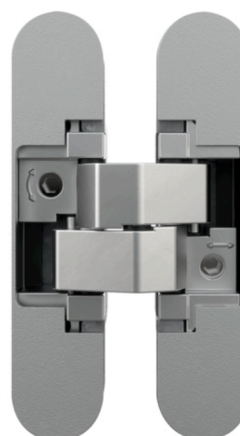
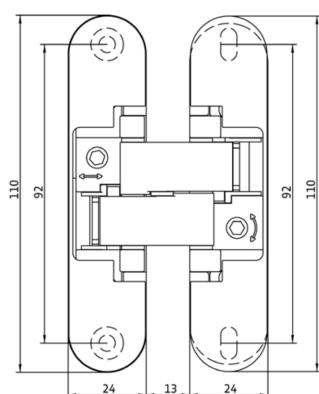


## AN 160 3D

for unrebated residential doors up to 60 kg

100%意大利制造



## AN 160 3D 产品特点

两只承重60KG

最大开启角度180度

完全隐藏式铰链系统

用于木结构

用于住宅门

3D可调 (侧面 $\pm 1,5$ 毫米, 高度 $\pm 2,5$ 毫米, 压缩 $\pm 1,0$ 毫米)

### Quality marks



Certification IFT



Certification UL



Certification CE

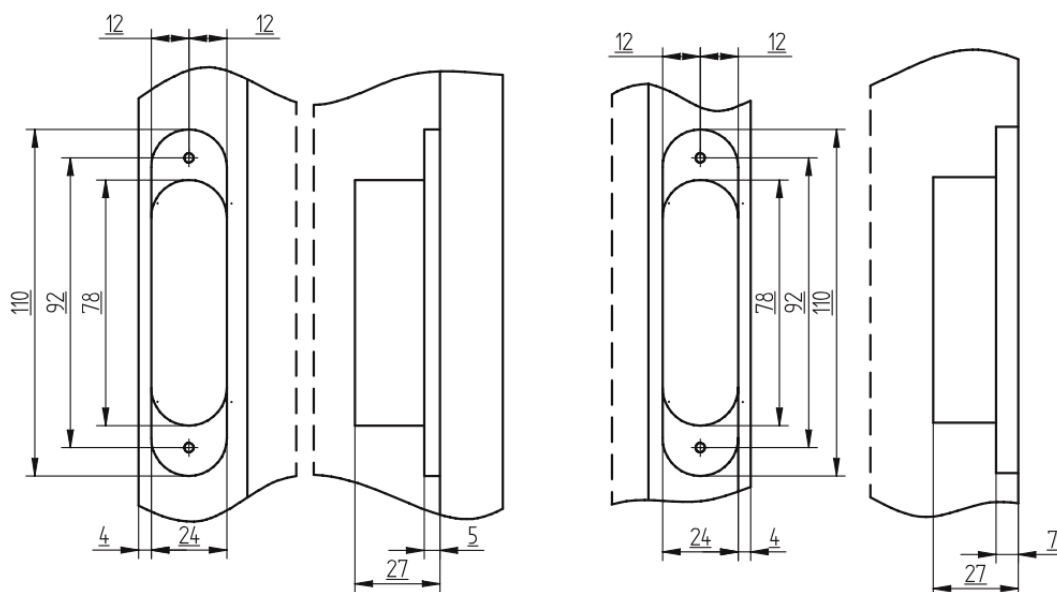
### Technical details

Attributes	Value
Load capacity	60,0 kg
Overall length	110,0 mm
Width (door part)	24,0 mm
Width (frame part)	24,0 mm
Cutter diameter	14,0 or 16,0 mm
Collar ring diameter	25,0 or 27,0 mm
Opening angle	180°

**FRESATURE MILLING**

Stipite Frame

Porta Door



AN160 3D 常备库存色 (四色可选)



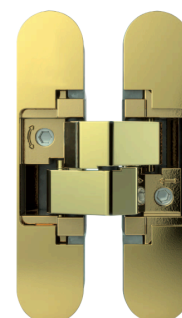
Cromo Alluminio (AN 036)



Bronzo antico (AN 035)

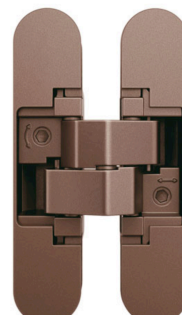


Nero (AN 018)



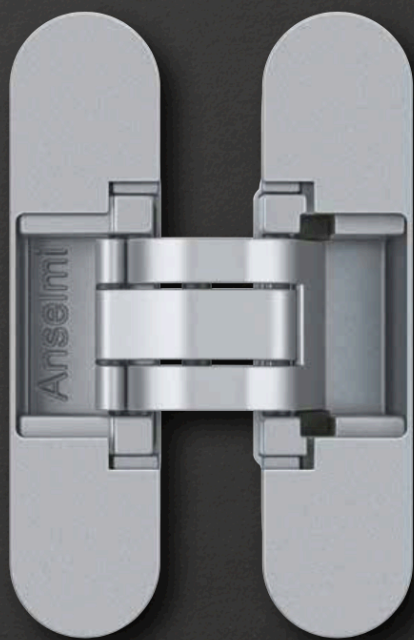
Ottone lucido (AN 037)

AN160 3D 少量库存色：AN050石墨灰色和AN051棕古铜色可选



## AN 172 3D

Per porte a filo residenziali  
interne da 38-45 mm con  
rivestimento fino a 4 mm

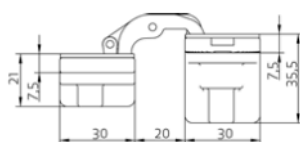
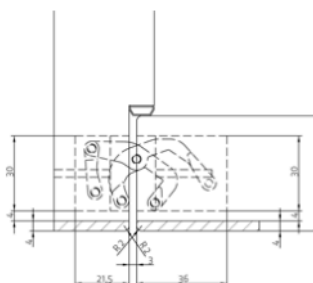
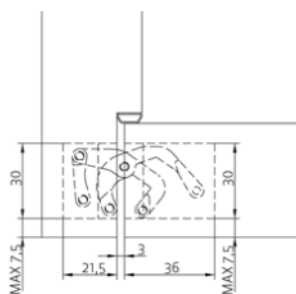
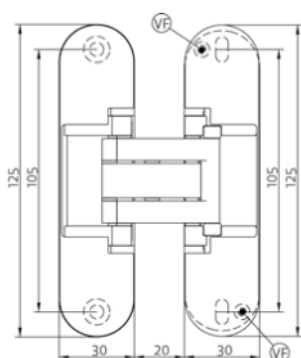


### AN 172 3D产品特点

- 机架上的铣削深度减少到21毫米
- 门厚度38-45毫米
- 可能安装最大4毫米的覆盖物
- 完全隐藏的铰链系统
- 用于木制框架
- 用于嵌入式室内门
- 3D可调 ( 横向 $\pm 1.5\text{mm}$  , 高度 $\pm 2.5\text{mm}$  , 压力 $\pm 1.0\text{mm}$  )

[www.dhncn.com](http://www.dhncn.com)

100%意大利制造



## AN 172 3D

per porte a filo residenziali interne da 38-45 mm, con profondità di fresata telaio da 21 mm, fino a 60 kg e con rivestimento fino a 4 mm

Cerniere	profondità fresata di 21 mm	fino a 60 kg
----------	-----------------------------	--------------

### Proprietà prodotto

- profondità fresata sul telaio ridotta a 21 mm
- spessore anta 38-45 mm
- possibile installazione di rivestimenti fino a 4 mm
- sistema cerniera a scomparsa totale
- per telai in legno
- per porte interne residenziali a filo
- regolabile 3D (laterale +/- 1,5 mm, altezza +/- 2,5 mm, pressione +/- 1,0 mm)
- materiale zama

### Dati tecnici

Portata	60,0 kg
Altezza totale	125,0 mm
Larghezza (telaio)	30,0 mm
Larghezza (porta)	30,0 mm
Diametro fresa	14,0 o 16,0
Anello guida diametro	25,0 o 27,0
Angolo di apertura	180°

### Finiture

Cromo satinato (AN 014), Bronzo verniciato (AN 017), Nero (AN 018), Bronzo antico (AN 035), Cromo Alluminio (AN 036), Ottone lucido (AN 037), Cromo lucido (AN 039), Nickel satinato (AN 044), RAL 9016 Bianco (AN 049)

### Suggerimento

**i** La portata di cui sopra si riferisce all'uso di 2 cerniere per porta (900 x 2100 mm).

Viti suggerite:

Lato stipite: Viti a testa svasata DIN 7505 A, Diametro 4,5 mm

Lato porta: Viti a testa cilindrica DIN 7505 B, Diametro 4,5 mm

Se necessario è possibile bloccare la regolazione in altezza inserendo una vite di fissaggio (VF).

AN172 3D ( 018 ) 黑色  
AN172 3D ( 050 ) 无烟煤色