

# Pivot

Hinge range for flush fit design doors

# hinge



# Pivot hinges for design doors

## Pivot hinges for interior design doors.

Optimisation of living space and care for architectural detail thanks to simplicity and minimalism.

These are the latest interior design requisites that overturn the concept of traditional interior fittings, leading to recessed jambs, trims and, most of all, exposed hinges.

The use of flush fit doors in modern interior design has been quite a challenge for hinge manufacturers. SFS has tackled this challenge by providing not just a hinge, but an entire range of products that meet the requirements of both door manufacturers and architects alike.

The former are happy to use our products due to their ease of use and adjustment; the latter appreciate how our range emphasizes their design potential, allowing them to realise their idea of contemporary interior design.



<b>CAB-R 3D</b>	4
<b>CAB-R</b>	8
<b>CAB - CAB-22</b>	12
<b>CIR -003 - 016</b>	18
<b>CAB-V</b>	24
<b>CABR-H</b>	28



## **CAB-R 3D** **stable and innovative hinge** **Elegant balance between aesthetics and durability.**

Minimalist design, load capacities, and versatility are the main features of these high value added hinges.

They meet the aesthetic requirements of modern design, as well as the structural requirements of the main interior door manufacturers.

These innovative hinges are the result of important and continuous studies carried out by SFS into the markets it operates within, and especially of the continuous dialogue with our customers to understand their needs.

The CAB-R 3D hinge can be adjusted in the 3 dimensions using a single hex key (height: 0/+3 mm, side: +/-1.5 mm and depth: +/-2 mm).

It makes both the door panel and the frame reversible, meeting all manufacturing requirements with a single hinge.

Available in two versions, short and long, and can be applied upon milling door panels with a thickness ranging between 35 and 45 mm.

Thanks to its fastening system to the door panel and the self-lubricating bushes, which ensure smooth and maintenance-free movement over time, CAB-R 3D has passed the 200,000 cycle test with an 80 Kg door with ease.

# CAB-R 3D

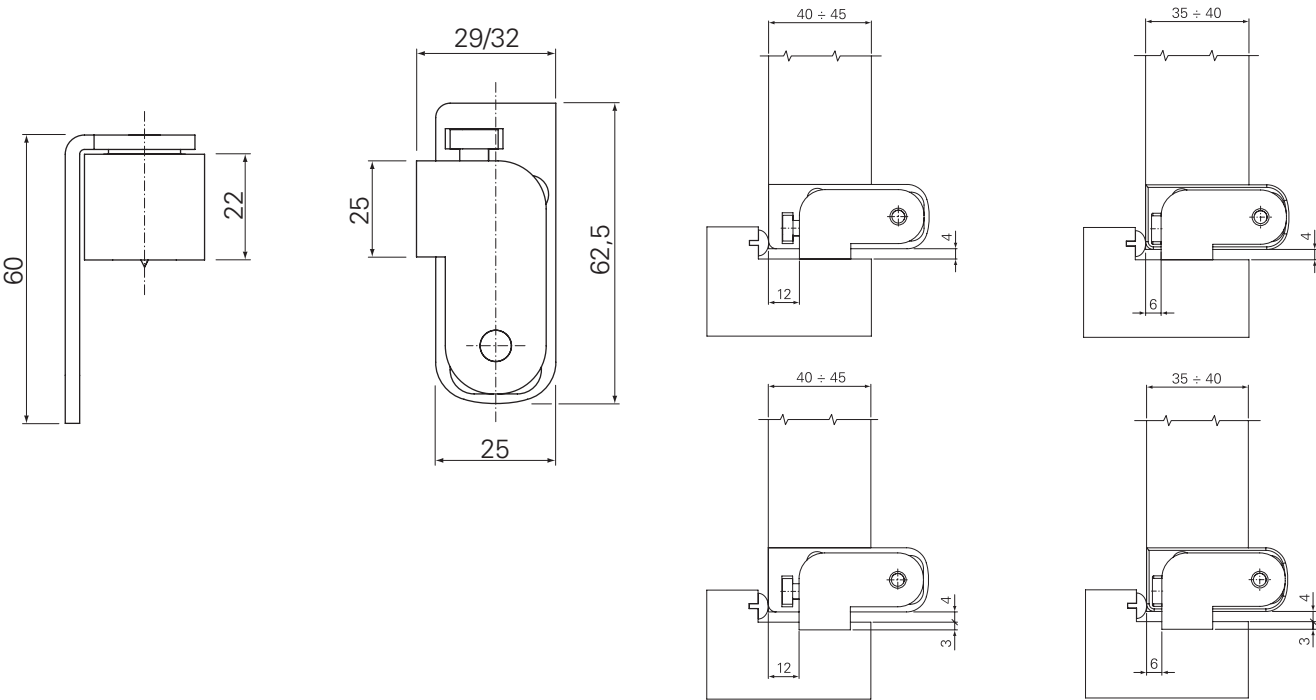







# Description & Accessories

## CAB-R 3D



Ordering codes	CAB-R 3D for 40-45 without milling (32)	Finish	Packaging	Load capacity	CAB-R 3D
1272698	CAB-R 3D-001	Matt chrome	6 pcs.	1 pair	80 kg
1158391	CAB-R 3D-001	Brassed	6 pcs.		
Ordering codes	CAB-R 3D for 40-45 with milling (29)				
1272699	CAB-R 3D-002	Matt chrome	6 pcs.		
Ordering codes	CAB-R 3D for 35-40 without milling (32)	Finish	Packaging		
1272805	CAB-R 3D-003	Matt chrome	6 pcs.		
1197702	CAB-R 3D-003	Brassed	6 pcs.		
Ordering codes	CAB-R 3D for 35-40 with milling (29)	Finish	Packaging		
1272806	CAB-R 3D-004	Matt chrome	6 pcs.		
11197705	CAB-R 3D-004	Brassed	6 pcs.		



Ord.code center part	Finish	Packaging
1568367	Brassed	1 pcs.
1565413	Nickel	1 pcs.



www.sfsintec.biz/it/ht008



## **CAB-R** minimalist design

**Behind design a cutting-edge technology.**

Its elegant round design, easy adjustment and 180° opening makes this innovative hinge a must in this sector

It has been designed for simple and inexpensive application to both right and left-hand doors.

SFS has created a full system for this product. In fact, besides the hinge, we provide embellishing cover caps, available in various colours, which can be applied inside the jamb, and the milling template, to optimise manufacturing times.

Adjustments are carried out once the door is mounted, using simple hex keys.

The sash part allows adjusting the door laterally up to +/- 3.0mm, whereas the frame part allows adjusting the depth by +/- 1.5mm.

The rotation fulcrum consists of a steel pin covered with a self-lubricating material, which ensures sliding and prevents squeaks and maintenance over time.

As all SFS products, CAB-R is technically reliable and has been tested to 200,000 cycles with a 70 kg door.

# CAB-R

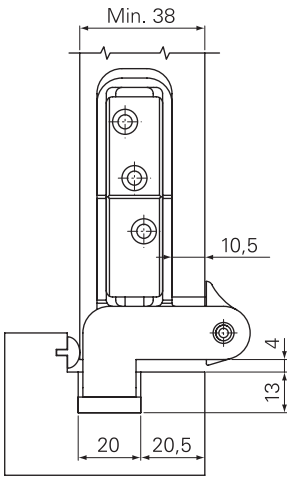
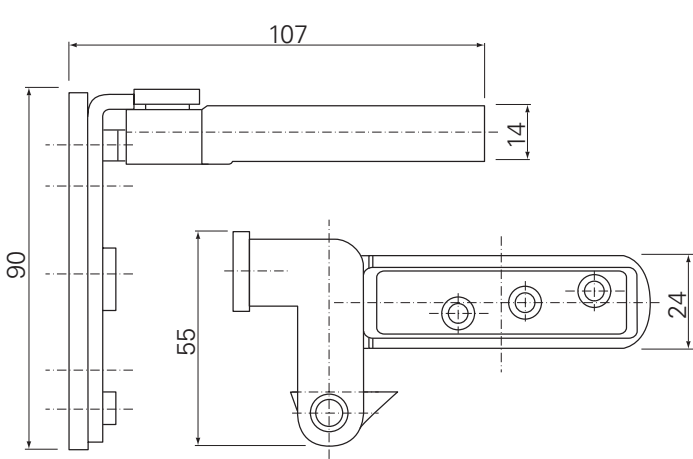






# Description & Accessories

## CAB-R



Ordering codes	CAB-R	Finish	Packaging
1272070	CAB-R	Matt chrome plated	6 pcs.
516543	CAB-R	Gold colour	6 pcs.

Load capacity	CAB-R
1 pair	80 kg



Ord.code center part	Finish	Packaging
1568367	Brassed	1 pcs.
1565413	Nickel	1 pcs.



www.sfsintec.biz/it/ht007



## **CAB** simple design

**A double offer that meets essential requirements of modern design.**

Two hinges with different aesthetics, one with a rounded design and the other with squarer shapes, which meet the requirements of modern interior design.

Easy to install and particularly suitable for industrial clients, thanks to the symmetry; the rotation point has been reinforced and the pin has been elongated to improve the seal.

Moreover, the square version has a self-lubricating bush, which makes the fixtures slide easily, keeping them squeak-free and maintenance-free.

A 1mm nylon spacer, which can be applied to the frame, is available for possible adjustments whilst installing the door.

Brass, chrome, and matt nickel coated finishes are the aesthetic options for these hinges

# CAB

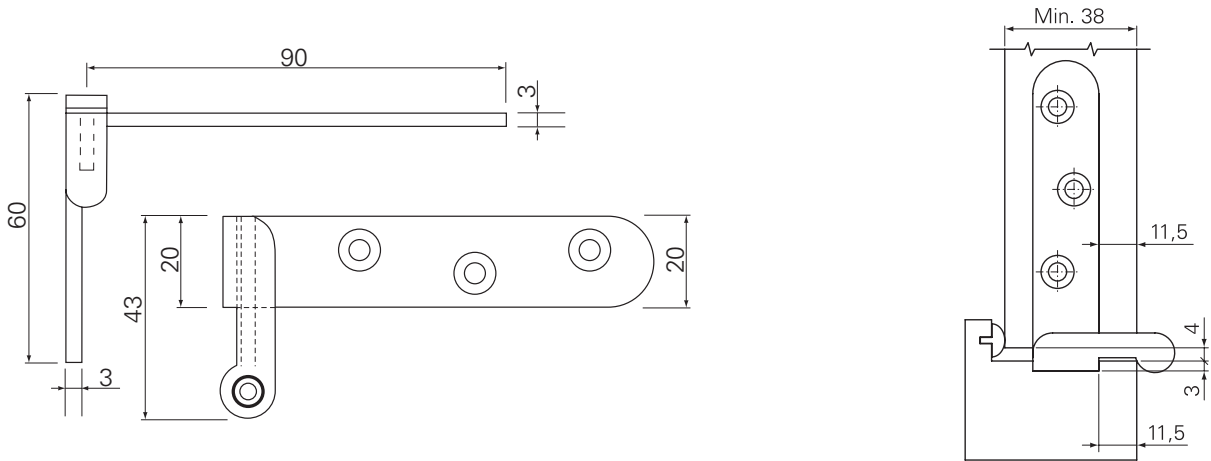






# Description & Accessories

## CAB



Ordering codes	CAB	Finish	Packaging
954008	CAB	Matt nickel	10 pcs.
1272496	CAB	Brassed	10 pcs.

Load capacity	CAB
1 pair	40 kg



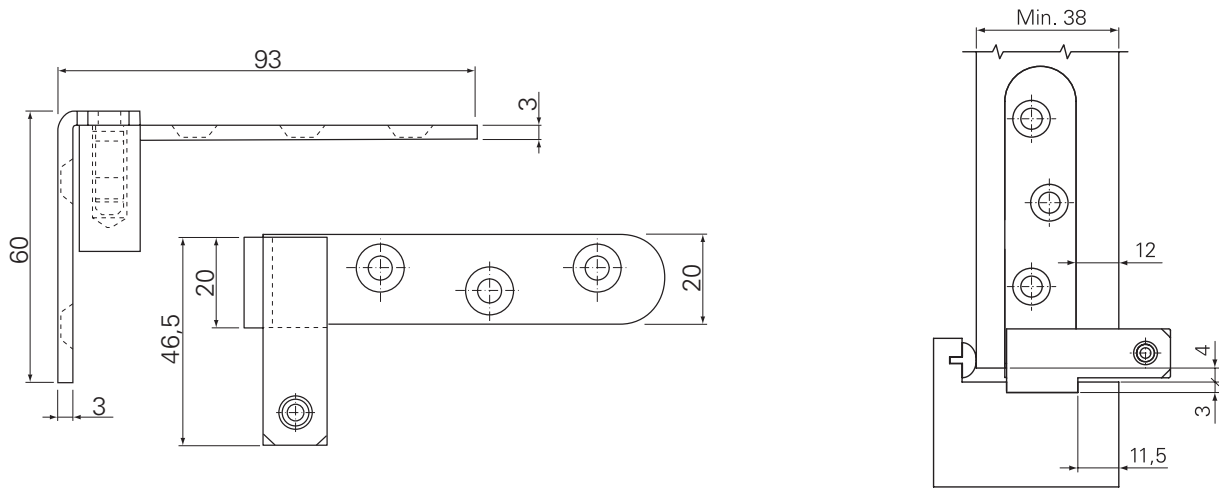
Ord.code center part	Finish	Packaging
1568367	Brassed	1 pcs.
1565413	Nickel	1 pcs.





# Description & Accessories

## CAB-022



Ordering codes	CAB-022	Finish	Packaging	Load capacity	CAB-022
1272701	CAB-022	Matt chrome	10 pcs.	1 pair	55 kg



Ord.code center part	Finish	Packaging
1568367	Brassed	1 pcs.
1565413	Nickel	1 pcs.



## **CIR** invisible hinge

**Pivot hinge adjustable with 180° opening.**

An essential invisible hinge, that has been designed to be applied in a simple and inexpensive way on both right and left-handed doors.

Adjustments are carried out once the door is mounted, using simple hex keys. The sash part allows adjusting the door laterally up to +/- 3.0mm, whereas the frame part allows adjusting the depth by +/- 1.5mm.

The rotation fulcrum consists of a steel pin covered with a self-lubricating material, which ensures sliding and prevents squeaks and maintenance over time.

CIR is a full system. Besides the hinge, we provide embellishing cover caps, available in various colours, which can be applied inside the jamb, and the milling template.

Technically reliable, this new invisible hinge has been tested in 200,000 cycles with an 80 kg door.

# CIR

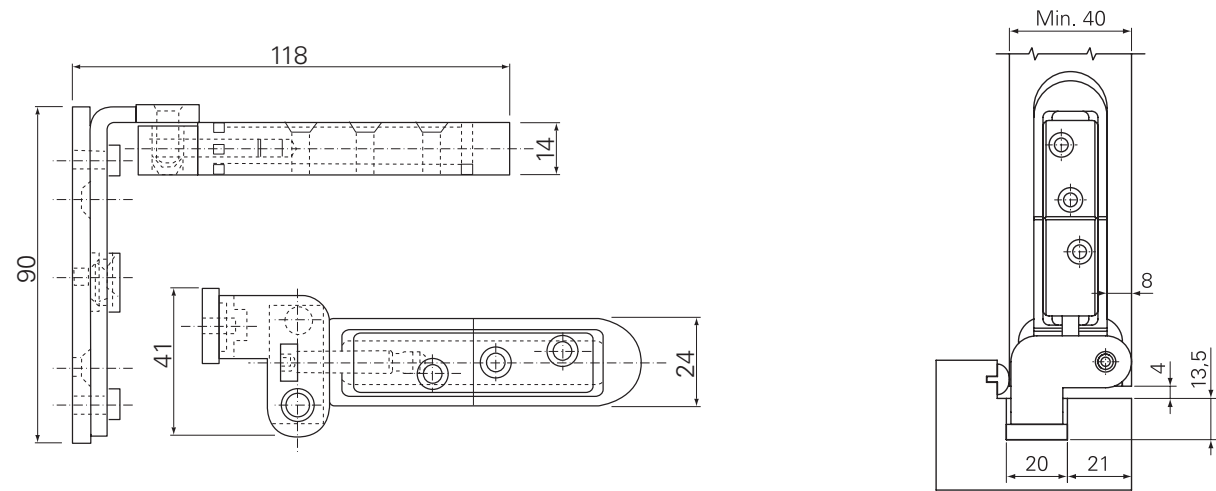






# Description & Accessories

## CIR-03



Ordering codes	CIR	Finish	Packaging	Load capacity	CIR
1272272	CIR-03	Zinc	6 pcs.	1 pair	80 kg



Ord.code center part	Finish	Packaging
1568367	Brassed	1 pcs.
1565413	Nickel	1 pcs.



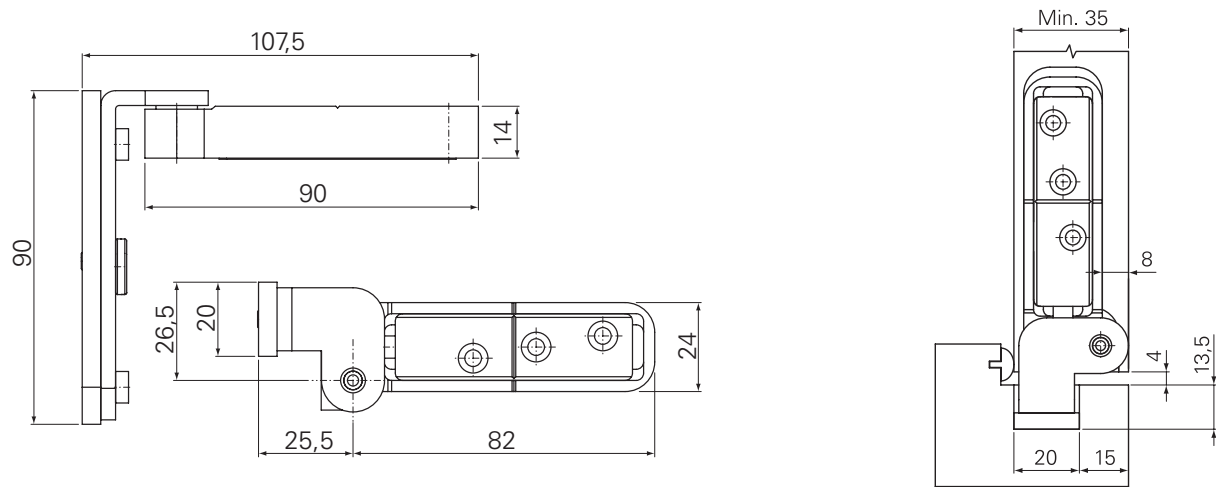
[www.sfsintec.biz/it/ht006](http://www.sfsintec.biz/it/ht006)





# Description & Accessories

## CIR-016



Ordering codes	CIR-016	Finish	Packaging	Load capacity	CIR-016
1392684	CIR-016	Zinc	6 pcs.	1 coppia	80 kg



Ord.code center part	Finish	Packaging
1568367	Brassed	1 pcs.
1565413	Nickel	1 pcs.



[www.sfsintec.biz/it/ht006](http://www.sfsintec.biz/it/ht006)



## **CAB-V** single glazing hinge

**Non-adjustable partition wall solution.**

CAB-V is a hinge created to aesthetic design criteria with a lightweight appearance to enhance glass doors for loads up to 100kg.

This hinge allows the door to open to 180° and the floor support foot can be simply adjusted with an Allen key up to 15mm.

Suitable for glazes with thicknesses of 8/10/12mm, it is quickly and easily assembled directly on the door glass.

# CAB-V

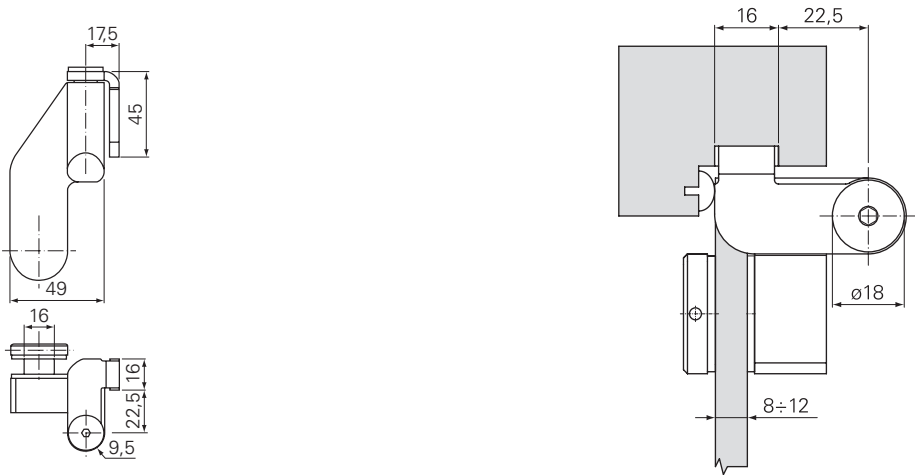






# Description & Accessories

## CAB-V



Ordering codes	CAB-V	Finish	Packaging	Load capacity	CAB-V
1617488	CAB-V left hand	Matt chrome	1 pc.	1 pair	100 kg
1617545	CAB-V right hand	Matt chrome	1 pc.		





## **CABR-H** double glazing hinge

**Adjustable partition wall solution.**

CABR-H is a minimalist hinge created to emphasise door design and the environment.

This hinge meets the aesthetic needs of partition wall manufacturers who require an adjustable product.

With a 180° opening, this hinge is extremely versatile because it is easily adaptable to different profiles and can be installed quickly and easily.

In addition to being mechanically adjustable 0/+6mm in height, it is equipped with an easily adjustable floor support foot using an Allen key up to 15mm.

The load capacity of this hinge has been tested to 200,000 cycles to support the considerable weights of double glazed doors of up to 160 kg.

CABR-H is an SFS-patented product.

# CABR-H

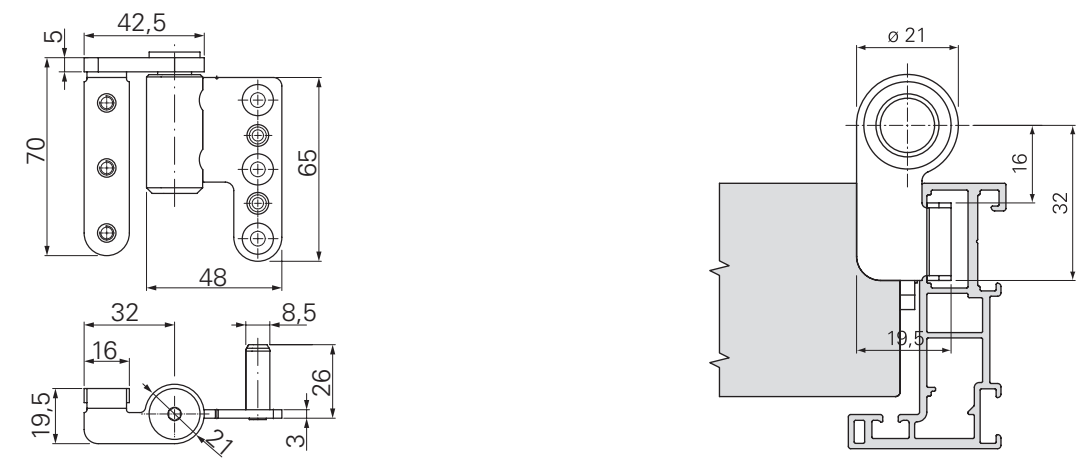






# Description & Accessories

## CABR-H



Ordering codes	CABR-H	Finish	Packag	Load capacity	CABR-H
1609979	CABR-H left hand	Matt chrome	1 pc.	1 pair	160 kg
1609981	CABR-H right hand	Matt chrome	1 pc.		







SFS intec S.r.l  
Via Castelfranco Veneto 71  
IT-33170 Pordenone

[it.info@sfsintec.biz](mailto:it.info@sfsintec.biz)  
[www.sfsintec.it](http://www.sfsintec.it)